

# USRobotics®

www.usr.com/uk

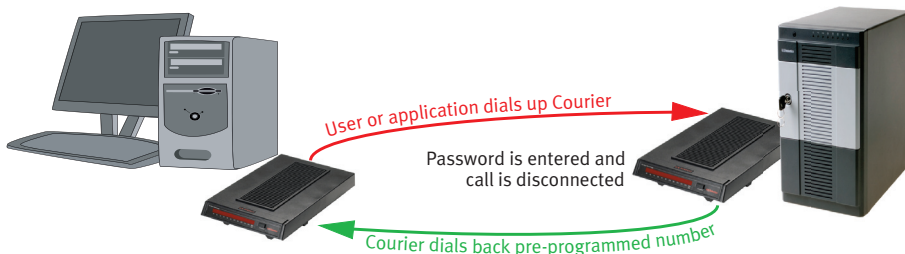
Dial-up Solutions for  
Mission Critical Connections

With network connections running in the billions of bits/second for businesses and millions of bits/second even in homes, it is easy to forget that often the most critical connection may only require thousands or even hundreds of bits per second . . .

When rock-solid reliability, flexibility and security matter most, you will be glad you chose USRobotics.

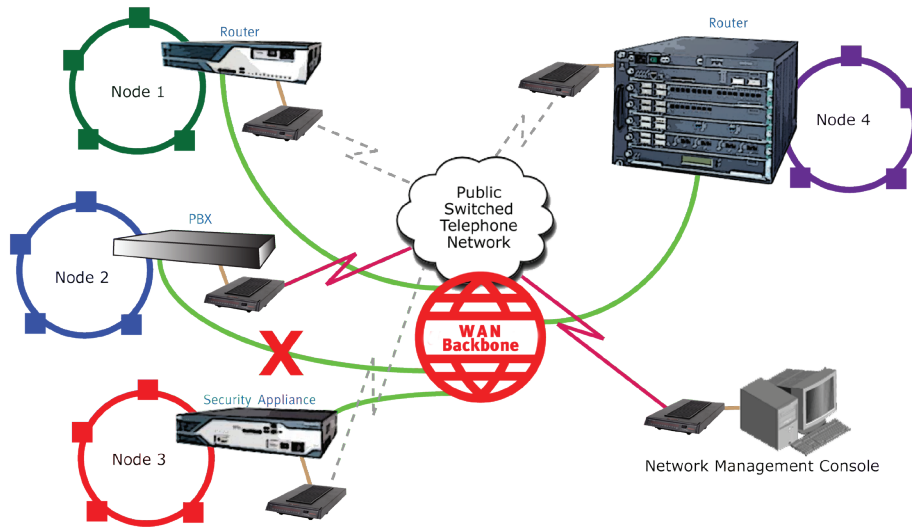
### Courier 56K Business Modem for mission critical data connections

- V.Everywhere Technology – Designed to work in countries throughout the world and is approved in more than 75 countries
- VersaPower Kit – Included in each Courier is a 110V – 240V power supply that features clip-on plugs for use in North America, EMEA and UK.
  - Also includes a special clip-on power cord attachment that can be used to make it an in-line power supply
  - Additional kits are available for use in other countries
- Performance – Internal testing, using industry standard modem test procedures show the Courier to provide superior performance all along the spectrum, from poor to optimal line conditions, especially so with bad phone lines.
- Remote Management/Remote Flash – Configure and troubleshoot Couriers from anywhere, including firmware upgrades
- Advanced Line Probing Technology – This capability assures the best possible connection over the phone line. While other modems step down until a connection is satisfactory, the Courier is unique in that if line conditions improve, it will actually step up, improving the speed of the connection in process.
- Dialback Security – Supporting up to 80 passwords
- External Dip Switches – Allows the Courier to be configured without being accessed via a terminal.
- Warranty – 2 years



# Key Applications

Using Courier Modems for Out-of-Band Connection to a Network



Application	Description	Primary USR SKU	Key Feature/ Benefits
Out of Band Connections	<p>Many network components deployed throughout wide geographic areas have the capacity to be remotely managed using serial or USB connections.</p> <p>For example, the Cisco 2800 Family has an RS232 serial port option, and their 3800 Family has an RJ45 serial port option (requires a readily available RJ45 to DB25 cable).</p> <p>Many PBX's, Routers, Fiber Switches, medical imaging equipment, etc., can take advantage of this type of application.</p>	USR843453C - Courier 56K Business Modem	<p><b>Application</b></p> <ul style="list-style-type: none"> <li>• Reduced maintenance expenses (fewer premises visits)</li> <li>• Access to network gear even when problem is in high-speed connections</li> </ul> <p><b>Courier Modem</b></p> <ul style="list-style-type: none"> <li>• Rock-solid reliability</li> <li>• Multiple security options</li> <li>• Remote management</li> <li>• Lifetime warranty</li> <li>• Global platform</li> </ul>
Point-of-Sale (Catering Cinemas Ticketing machines Petrol Stations)	<p>Short data transactions are more dependent on quickly establishing the connection, than the speed of the network. Modems are an ideal option for making quick connections, using some of the slower speed, but fast connecting protocols.</p> <p>Equipment supported includes cash registers, lottery machines, credit/debit card verification, etc.</p>	<p>USR843453C</p> <p>USR5638 (internal PCIe)</p> <p>USR802981-OEM (internal low-profile)</p> <p>USR015630G (external serial)</p> <p>USR805637 (USB)</p>	<p><b>Application</b></p> <ul style="list-style-type: none"> <li>• Universally available network connections</li> <li>• Wide variety of compatible equipment</li> </ul> <p><b>USR Modems</b></p> <ul style="list-style-type: none"> <li>• Flexible interfaces (USB, Serial, PCI, PCIe)</li> </ul>
Server Maintenance and Monitoring	<p>Accessing a remote server to perform maintenance, diagnostics and software upgrades is critical to efficiently serving customers. Dial-up connections are a great option for performing those operations remotely, even when network resources are the source of the problem.</p>	<p>USR843453C</p> <p>USR5638 (internal PCIe)</p> <p>USR802981-OEM (internal low-profile)</p> <p>USR015630G (external serial)</p> <p>USR805637 (USB)</p>	<p><b>Application</b></p> <ul style="list-style-type: none"> <li>• Universally available network connections</li> </ul> <p><b>USR Modems</b></p> <ul style="list-style-type: none"> <li>• Flexible interfaces (USB, Serial, PCI, PCIe)</li> <li>• Multiple security options</li> </ul>

