

Using Courier Modems for Out-of-Band Connection to a Network

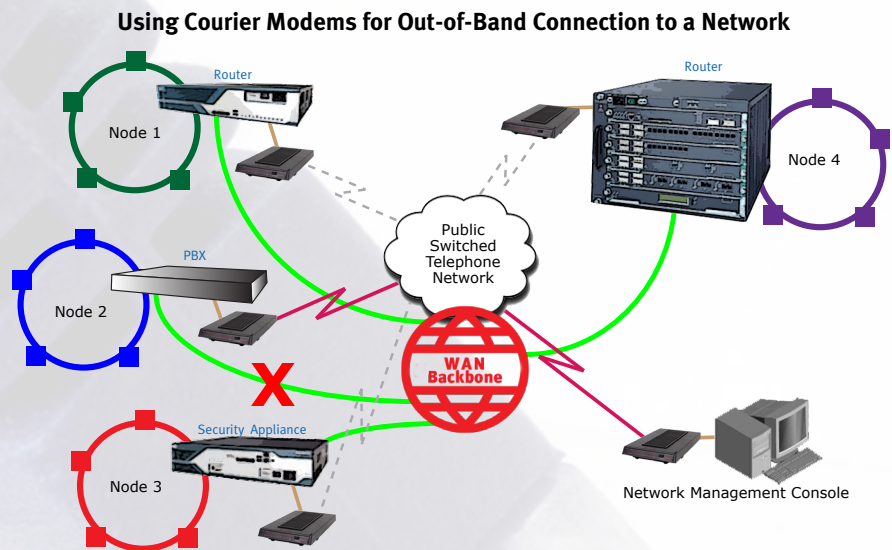
The Scenario

A customer deploys various Cisco “or other Edge” Routers in their network infrastructure. Day to day management is done over the existing network (In-Band), however the Managed Services Partner needs a secure and reliable way to remotely diagnose problems even when there are network outages (in the example below Node 2 is offline).

The Solution

USRobotics Courier modems provide an ideal solution for Out-of-Band network management providing:

- A secure path to manage a remote network, without interfering with normal traffic
- An alternative route into equipment for maintenance, management and trouble diagnosis
- An extremely cost effective way to perform contracted network management or support managed services networks



Key Applicable Courier Features

- **Dial Back Security** – Remote modems will only dial-back into preprogrammed management locations
- **Hardware “Multi-Switch”** – Execute Stored Command function to allow remote personnel to reset to planned configuration
- **V.Everywhere/Global Reach** – Provide remote management globally if needed
- **Remote Management/Flash** – Network changes, modem updates and tweaks are done from a central site

Other Applications of Out-of-Band Connectivity

- Any network infrastructure with remotely managed nodes that support Serial connection (RS232 or RJ45). The Courier will offer security, reliability, remote manageability, performance
- Many PBX equipment and VoIP systems fit this category

The bottom line is if you need an ability to remotely maintain, diagnose or even upgrade network equipment, an Out-of-Band solution should be part of the network plan.