

Wireless Access PCI Adapter

Note: For the most updated information, visit: <http://www.usr.com/support>. You can also refer to the Companion Reference Guide and to the User Guide on the U.S. Robotics Installation CD for more information.

Wireless Access PCI Adapter Installation

1 Prepare for software installation

Turn on your desktop computer. Type your password if you are prompted to do so.

Note: It is very important that you have your serial number written down before you install the PCI adapter. If you ever need to call our Technical Support department, you will need this number to receive assistance.



Serial Number

Note: Be sure to find out what letter your CD-ROM drive uses before you begin installing your new product. You will need to know this to properly install your software.

2 Install your software

Note: You will need to install this software on all the PCs or laptops you plan to wirelessly network together.

Insert your U.S. Robotics Installation CD-ROM into your CD-ROM drive. In the Choose Setup Language window, select your preferred language and click **OK**.

Note: If your CD-ROM does not automatically launch, click Windows **Start, Run**, and type **D:\setup** (or the appropriate letter of your CD-ROM drive) and click **OK**.

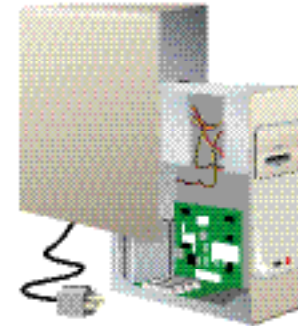
Some files will be copied to your system, and then you will be asked to read the license agreement. Read the agreement and click **Yes**.

The Installation CD Graphic User Interface (GUI) will appear on your screen. Click **Software**. Click the icon for the U.S. Robotics Wireless Configuration Utility. Click **Wireless PC Card or PCI Adapter**. Follow the on-screen instructions and wait for some files to be copied to your hard drive. A window will appear showing you the files that have loaded onto your system. Close this window. The program window with the Configuration Utility icons will appear. Close this window.

Your software setup is complete. Click **OK**, and prepare to install your hardware. Do not remove the U.S. Robotics Installation CD from your CD-ROM drive. Shut down your computer.

3 Prepare for hardware installation

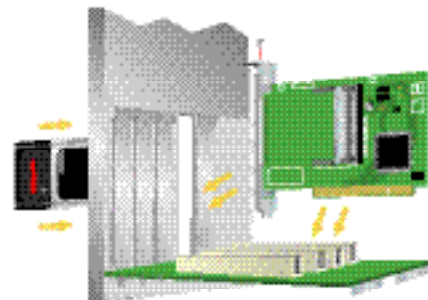
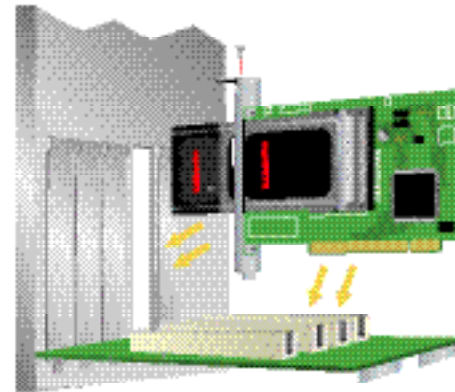
Unplug your computer and remove the computer's cover.



4 Connect the Wireless Access PCI Adapter to your computer

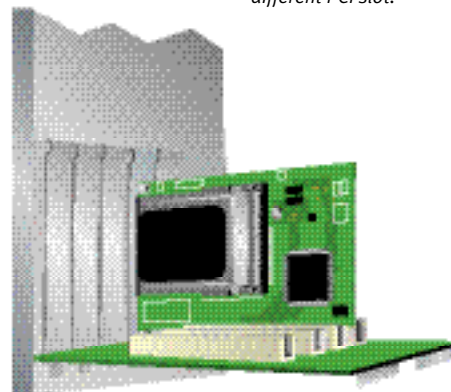
Locate an available PCI slot and insert the Wireless Access PCI adapter. PCI slots are typically white plastic lined with metal and are 3.5 inches long. Use the slot cover screw to secure the PCI adapter.

Note: It can be tricky getting the Wireless Access PCI Adapter into the PCI slot. Use firm pressure to seat the Wireless Access PCI Adapter properly.

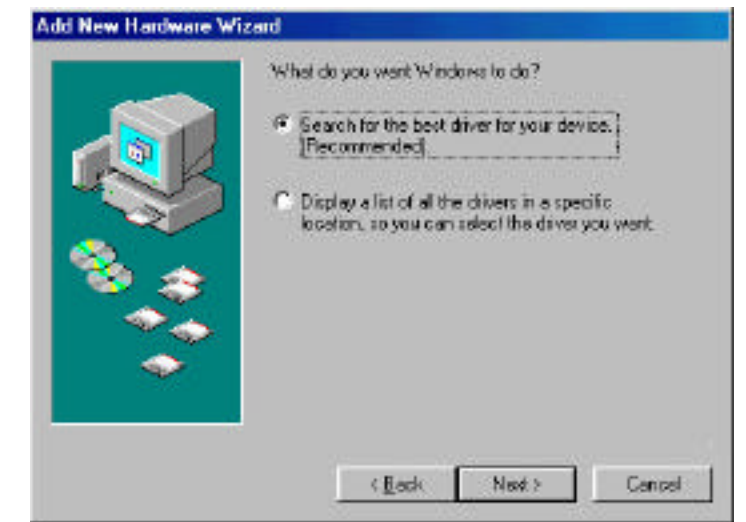


Some computers require you to remove the PC Card from the Wireless Access PCI Adapter before you insert the PCI Adapter into the PCI slot. If necessary, pull the PC Card out of the Wireless Access PCI Adapter and set it aside. Insert the Wireless Access PCI Adapter into the PCI slot, pressing firmly to seat it properly. Then slide the PC Card through the slot and into the Wireless Access PCI Adapter. Inserting the PC Card into the Wireless Access PCI Adapter in this manner can be awkward, so take your time.

Note: If you experience any problems installing the Wireless Access PCI Adapter, try installing it in a different PCI slot.



5 Install your drivers*



Replace your computer's cover and turn on your desktop computer. You may get a window saying the Configuration Agent couldn't connect to the Network Agent. If you do, click **OK**. When Windows detects the new hardware, click **Next**. If Windows does not automatically begin searching for the correct drivers, select **Search for the best driver for your device (Recommended)** and click **Next**. Select **Specify a location**. Type **D:\drivers** (or the appropriate letter of your CD-ROM drive instead of "D") and click **Next**. Click **Next** again.

Note: If you are prompted at any time for your Windows Operating System CD-ROM, remove the U.S. Robotics Installation CD-ROM and insert your Windows CD-ROM into the CD-ROM drive. When all of the files are copied, remove the Windows CD-ROM, and reinsert the U.S. Robotics Installation CD-ROM.

When you see the U.S. Robotics Wireless Access PCI Adapter window, click **OK**. This will install the default settings. Wait for the files to be copied.

If you do not receive any prompts to insert your Windows CD-ROM, simply click **Finish**.

Congratulations! You have finished installing your hardware and your drivers! Reboot your machine and you will now see a small icon for the Configuration Utility in the system tray by your clock.



The Configuration Utility is used to change or verify the configuration information that relates to your Wireless Access PC Card or PCI Adapter. The Configuration Utility icon will be colored to indicate the status of your wireless network: red for disconnected, yellow for connected with poor quality, and green for connected with good quality.

You must now configure each computer that has a Wireless Access PC Card or PCI Adapter in order to share Internet connectivity, files, and a printer. Refer to the User Guide on the U.S. Robotics Installation CD for this information.

802.11b Ad Hoc mode is used for peer-to-peer network configurations. **Infrastructure** mode is used to add a Wireless Access Point to the wireless network configuration. Each Wireless Access PC Card or PCI Adapter in the wireless network must have the correct mode selected within the Configuration Utility. The Wireless Access PC Cards and PCI Adapters are set to **802.11b Ad Hoc** by default.

For troubleshooting and support information, refer to the Companion Reference Guide or to the User Guide on the U.S. Robotics Installation CD-ROM.

*A Digital Signature Not Found window may appear. Click **Yes**. Windows Me and 2000 will verify that your network device is properly installed.

Wireless Access PC Card

Note: For the most updated information, visit: <http://www.usr.com/support>. You can also refer to the Installation Companion and to the User Guide on the U.S. Robotics Installation CD for more detailed information.

Wireless Access PC Card Installation

1 Prepare for software installation

Turn on your laptop computer. Type your password if you are prompted to do so.

Note: It is very important that you have your serial number written down before you install the PC Card. If you ever need to call our Technical Support department, you will need this number to receive assistance.

Serial Number

Note: Be sure to find out what letter your CD-ROM drives uses before you begin installing your new product. You will need to know this to properly install your software.

2 Install your software

Note: You will need to install this software on all the PCs or laptops you plan to wirelessly network together.

Insert your U.S. Robotics Installation CD-ROM into your CD-ROM drive. In the Choose Setup Language window, select your preferred language and click **OK**.

Note: If your CD-ROM does not automatically launch, click Windows **Start**, **Run**, and type **D:\setup** (or the appropriate letter of your CD-ROM drive) and click **OK**.

Some files will be copied to your system, and then you will be asked to read the license agreement. Read the agreement and click **Yes**.

The Installation CD Graphic User Interface (G UI) will appear on your screen. Click **Software**. Click the icon for the U.S. Robotics Wireless Configuration Utility. Click **Wireless PC Card or PCI Adapter**. Follow the on-screen instructions and wait for some files to be copied to your hard drive. A window will appear showing you the files that have loaded onto your system. Close this window. The program window with the Configuration Utility icons will appear. Close this window.

Your software setup is complete. Click **OK**, and prepare to install your hardware. Do not remove the U.S. Robotics Installation CD from your CD-ROM drive.

3

Insert the Wireless Access PC Card into your computer



Locate an available PCMCIA slot and fully insert the PC Card. PCMCIA slots are typically on the side of laptops. You should hear a beep when the PC Card is fully inserted.

4

Install your drivers*



When Windows detects the new hardware, click **Next**. If Windows does not automatically begin searching for the correct drivers, select **Search for the best driver for your device (Recommended)** and click **Next**. Select Specify a location. Type **D:\drivers** (or the appropriate letter of your CD-ROM drive instead of "D") and click **Next**. Click **Next** again.

Note: If you are prompted at any time for your Windows Operating System CD-ROM, remove the U.S. Robotics Installation CD-ROM and insert your Windows CD-ROM into the CD-ROM drive. When all of the files are copied, remove the Windows CD-ROM, and reinsert the U.S. Robotics Installation CD-ROM.

When you see the U.S. Robotics Wireless Access PC Card window, click **OK**. This will install the default settings. Wait for the files to be copied.

If you do not receive any prompts to insert your Windows CD-ROM, simply click **Finish**.

Congratulations! You have finished installing your hardware and your drivers! Reboot your machine and you will now see a small icon for the Configuration Utility in the system tray by your clock.



The Configuration Utility is used to change or verify the configuration information that relates to your Wireless Access PC Card or PCI Adapter. The Configuration utility icon will be colored to indicate the status of your wireless network: red for disconnected, yellow for connected with poor quality, and green for connected with good quality.

You must now configure each computer that has a Wireless Access PC Card or PCI Adapter in order to share Internet connectivity, files, and a printer. Refer to the User Guide on the Installation CD for this information.

802.11b AdHoc mode is used for peer-to-peer network configurations. **Infrastructure** mode is used to add a Wireless Access Point to the wireless network configuration for extended range and increased number of computers that can join the network. Each Wireless Access PC Card or PCI Adapter in the wireless network must have the correct mode selected within the Configuration Utility. The Wireless Access Cards and PCI Adapters are set to **802.11b AdHoc** by default.

For troubleshooting and support information, refer to the Companion Reference Guide or to the User Guide on the U.S. Robotics Installation CD-ROM.

*A "Digital Signature Not Found" screen may appear. Click Yes. Windows Me and 2000 will verify that your network device is properly installed.