

# NAS Manager User's manual

SyncQuick™ NAS Manager is a NAS device searching and backup software that has been specifically developed for NAS Client users to provide simple, fast and reliable backup for all personal information including photos, MP3-files, and other important documents.

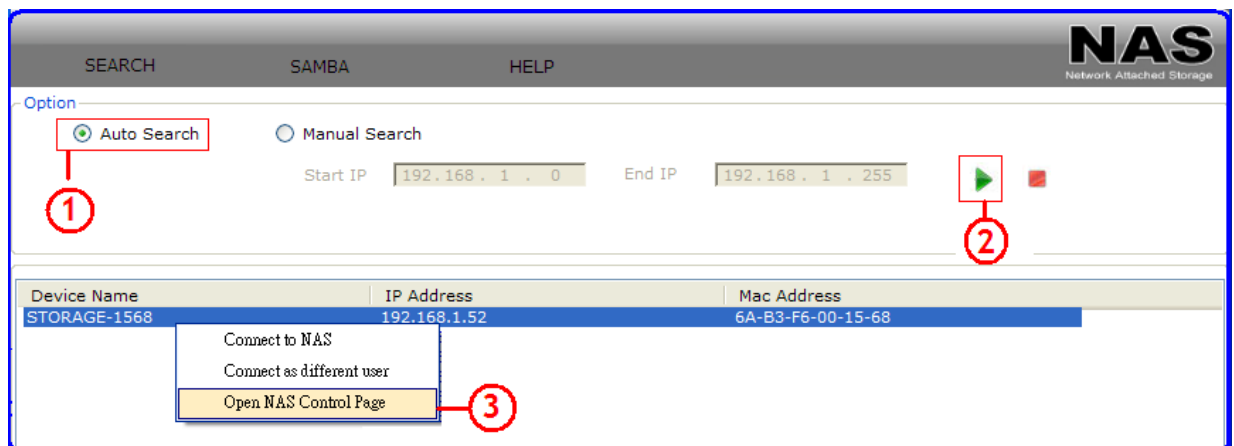
## 1. NAS Search and entering NAS GUI

1. Run the Utility CD enclosed in package, and installed SyncQuick™ NAS manager in to your computer.

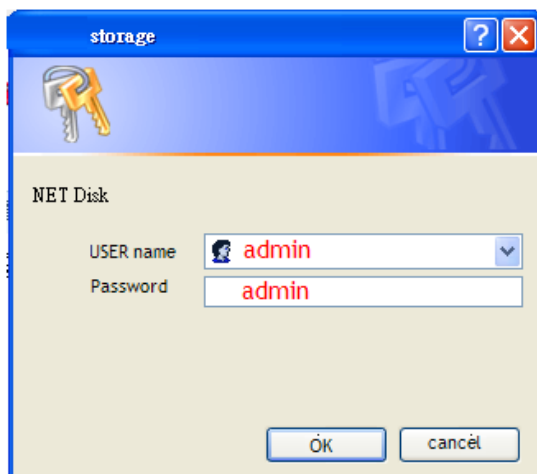


SyncQuick NAS Manager.exe

2. Select Auto Search and when Turbo NAS is found, right click the mouse button and select **“Open NAS Control page”** to start configurations.



3. Default login is **“admin”** for both user name and password, click **“OK”** to enter configurations.



#### 4. Enter to NAS GUI

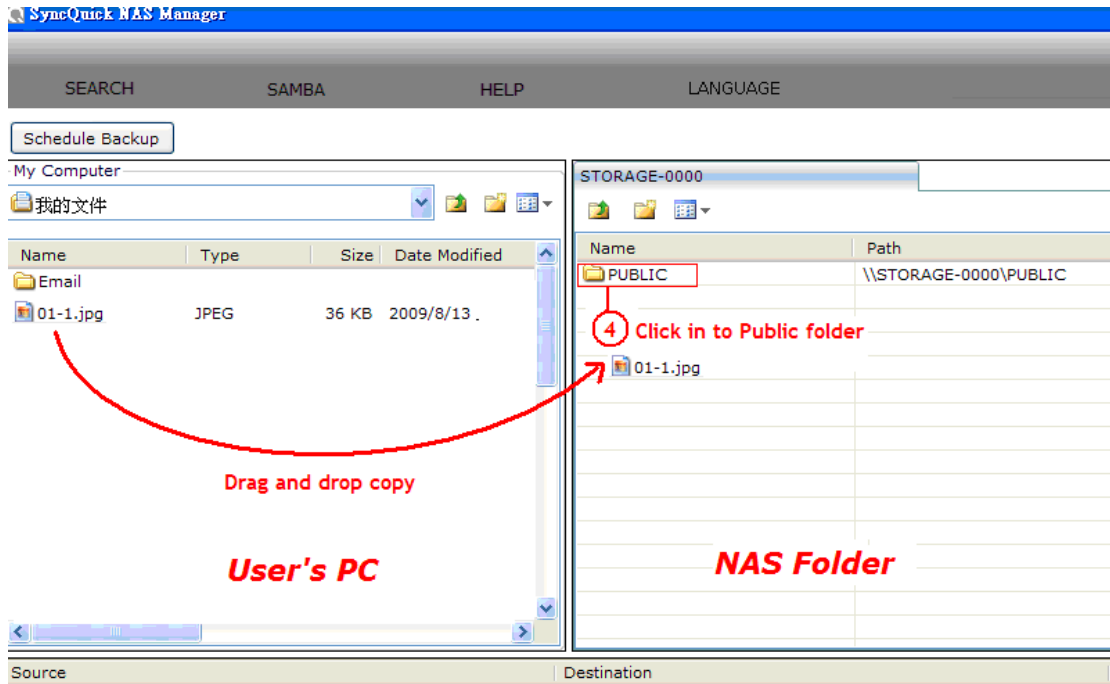
The screenshot displays the NAS GUI interface. At the top right, the logo "NAS Network Attached Storage" is visible. On the left, there is a sidebar with navigation options: Status, Identification, Time Setting, LAN Config, Disk Utility, Maintenance, Samba Server, FTP Server, Media Server, Print Server, and BitTorrent. The main content area is divided into three sections: Identification, Date and Time, and Disk Usage & Firmware. The Identification section shows Host name: STORAGE-0000, Group name: WORKGROUP, and Administrator: admin. The Date and Time section shows Date: 2009/10/09 14:18:16 GMT 8:00. The Disk Usage & Firmware section shows Firmware Version: G5S5020314152C0 L:1.20B, Free Size: 76449 MB free, and Total Size: 78533 MB.

## 2. Entering NAS folder

1. Log in to NAS Folder, click right side of mouse button, and select "Connect to NAS".
2. Input NAS folder password.
3. Click "OK" to enter the NAS Folder.

The screenshot shows the SyncQuick NAS Manager interface. At the top, there is a menu bar with options: SEARCH, SAMBA, HELP, and LANGUAGE. Below the menu bar, there is a section for "Option" with radio buttons for "Auto Search" and "Manual Search". The "Manual Search" option is selected. Below this, there are input fields for "Start IP" (192.168.1.0) and "End IP" (192.168.1.72), along with a green play button and a red stop button. The main area displays a table with columns: Device Name, IP Address, and Mac Address. The table contains one entry: STORAGE, 192.168.1.72, 00-B3-F6-00-00-00. A context menu is open over the "STORAGE" entry, showing options: "Connect to NAS", "Connect as different user", and "Open NAS Control Page". A red circle with the number "1" points to the "Connect to NAS" option. A "Login Details" dialog box is open, showing "User Name" (guest) and "Password" fields. A red circle with the number "2" points to the "User Name" field, and a red circle with the number "3" points to the "OK" button.

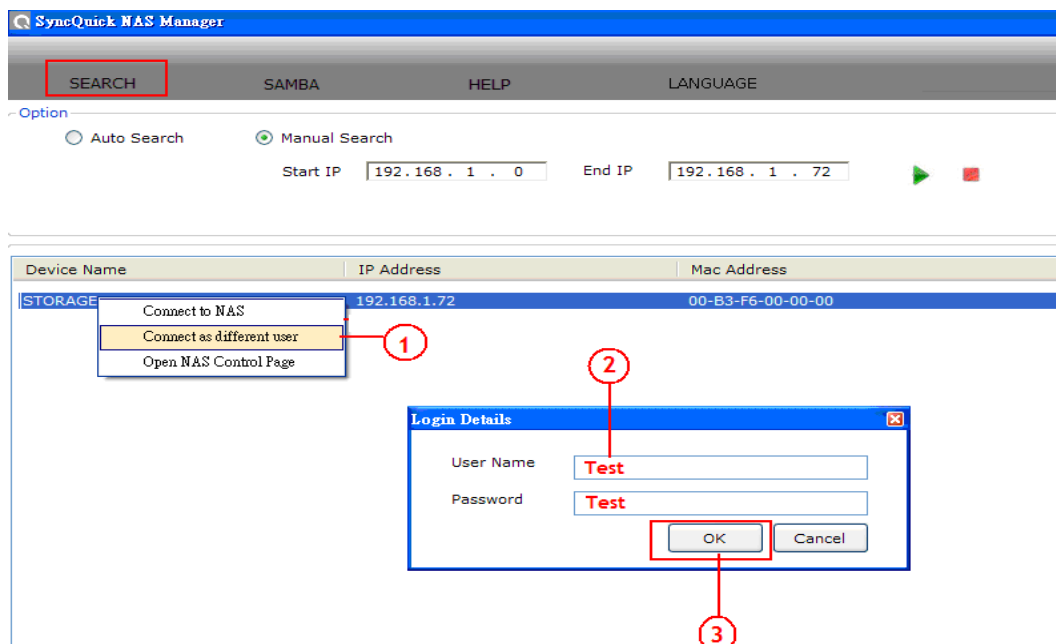
4. A Public folder will be created by NAS by default, click in to the Public folder and user can now copy data between PC and NAS.



5. If you wish to create more folder please go to **NAS Control page/ SMB/Add folder**, Please refer to the NAS user's manual for the setup detail.

### 3. Log in to another user /folder

1. Got to Search page again and right click Log in to NAS Folder, click right side of mouse button, and select **"Connect as different user"**.
2. Enter the user name and Password. ( for example: test is the folder you have created form NAS control page)
3. Click **"OK"** to log in the test folder.



#### 4. Scheduling Backup data in to NAS

1. The SAMBA section, click "**Schedule backup**" a back up setting page will pop up on the screen.
2. Select the a data source (Data you want to backup from) and a data destination, (For example: Back up my Tax file from PC to NAS test folder)
3. Select a copy frequency.
4. Enter the NAS folder user name and password. And click "**Save**" to create a back up list. You can create more than one backup job table here.
5. Select the backup job you just created and click "**Start**" to precede it.

